

Fitting Instructions

Baseplate for EC20-1 Industrial Vacuum Pump

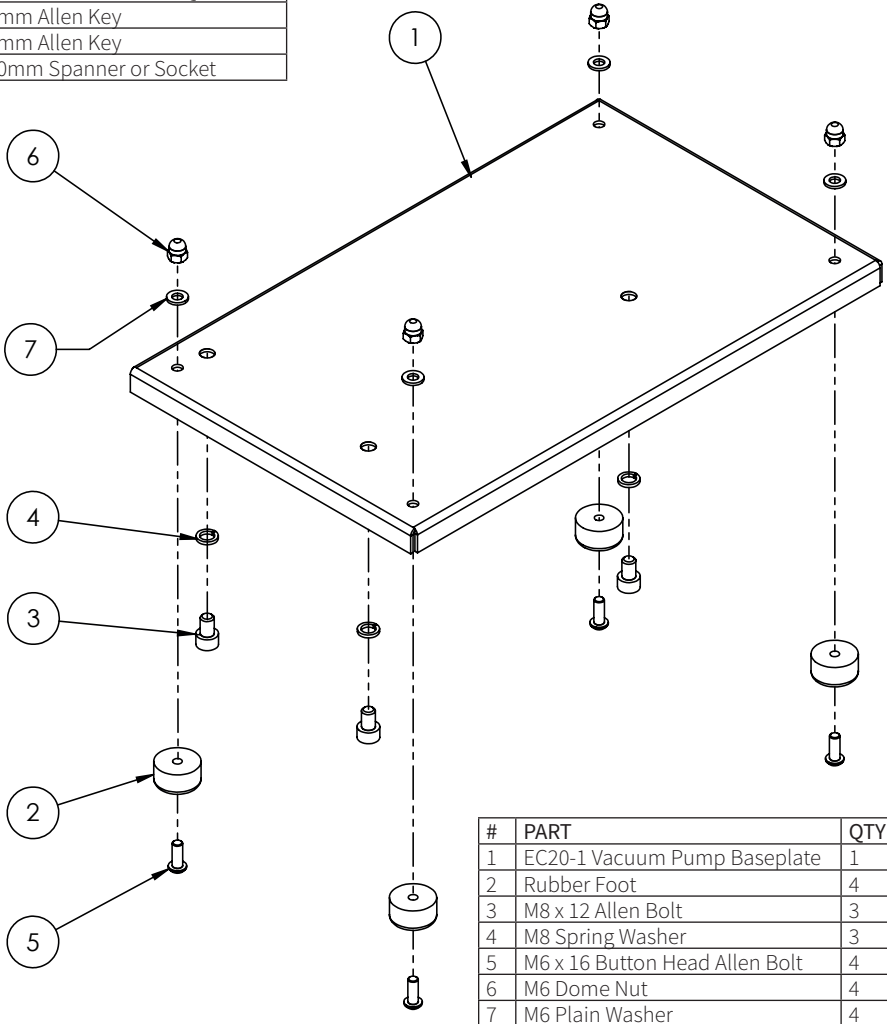
Introduction

This Baseplate for EC20-1 Vacuum Pump is designed specifically for the DVP EC20-1 vacuum pump and is not intended for fitment to any other vacuum pump.

Read the simple instructions in this guide before attempting to attach the baseplate to ensure correct fitment and avoid any damage to the pump.

Assembly Diagram

ASSEMBLY TOOLS REQUIRED	
4mm Allen Key	
6mm Allen Key	
10mm Spanner or Socket	



Tools Required (not supplied)

- 4mm Allen Key
- 6mm Allen Key
- 10mm Spanner or Socket

Preparation

- If connected, disconnect the power lead from the pump.
- The baseplate can be fitted whether or not the pump already contains oil however, if the pump does contain oil, pay particular attention to only tilt the pump as described in these instructions otherwise oil will drain from the pump.

Assembly

Step 1 – Fitting the Feet

- Push the M6 x 16 button head bolts into the rubber feet.
- Push the bolts of the feet through the 4 corners of the base plate from the underside.
- Position M6 plain washers onto the bolts from the topside of the baseplate.
- Secure the bolts using M6 dome nuts.
- Tighten the fasteners using a 10mm spanner or socket on the dome nut and a 4mm allen key.

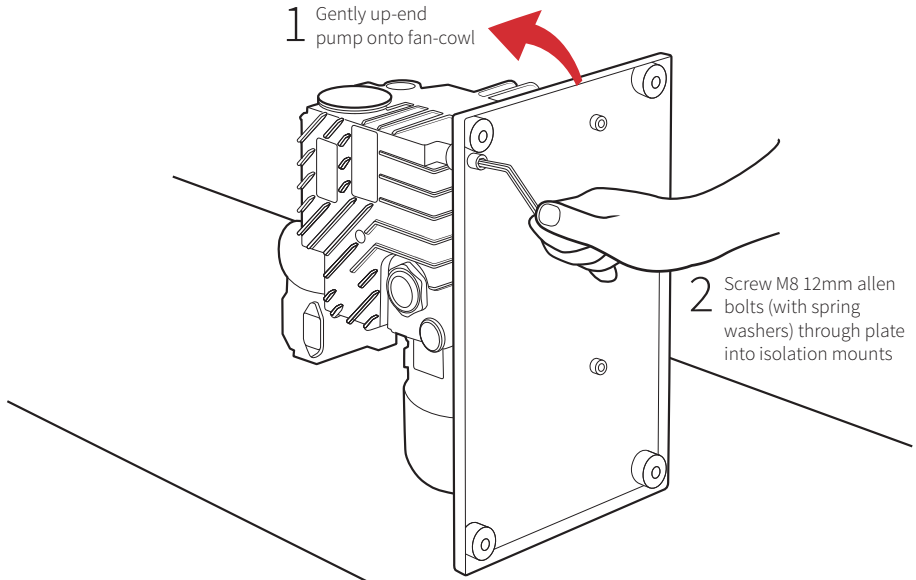
Step 2 - Fitting the Isolation Mounts to the Pump

The pump is supplied with 3 rubber isolation mounts. The mounts come with the vacuum pump and will be separate to the baseplate fasteners (which are packaged attached to the baseplate). The mounts can be identified by their integral M8 stud. Note: the mounts may have self adhesive rubber pads which can be peeled off to expose the mounting thread.

If the isolation mounts are not already fitted to your pump, screw the mounts onto the 3 threaded holes on the bottom of the vacuum pump using the integral M8 stud. Ensure the mounts are finger-tight before proceeding.

Step 3 – Securing the EC20-1 Pump to the Base Plate

It is strongly recommended that this task is carried out on a covered surface as oil in the pump may drain out as the pump is tilted incorrectly.



- On a piece of cardboard or similar soft surface, carefully stand the pump up on the fan cowl as shown. Do not turn the pump upside down or onto any other face as oil will drain out of the pump.
- Secure the base plate to the pump's isolation mounts using the M8 x 12 allen bolts and the M8 spring washers supplied. Tighten using a 6mm allen key.
- Tip the pump back onto its feet.

WWW.EASYCOMPOSITES.CO.UK

Easy Composites Ltd. Unit 39, Park Hall Business Village, Longton, Stoke on Trent, Staffordshire, ST3 5XA. United Kingdom.

Tel. +44 (0)1782 454499 | Fax. +44 (0)1782 596868 | sales@easycomposites.co.uk